



JavaOne 2005 報告 会 - 基調講演 と Java EE

石原 直樹

Java Technology Evangelist
Sun Microsystems, Inc.



Participation Age



The information age
is history.



Blogs vs. Traditional Media?



The screenshot shows a web browser window displaying a Blogger blog. The browser's address bar shows the URL: `http://sunandhelp.blogspot.com/2004_12_26_sunandhelp_archive.html`. The Blogger interface includes a search bar, navigation links like "Home" and "About Us", and a main content area. The blog title is "The South-East Asia Earthquake and Tsunami Blog". Below the title is a description: "aka the SEA-EAT blog. News and information about resources, aid, donations and volunteer efforts." There are several navigation buttons: "Tsunami Help Home", "Enquiry", "Missing Persons", "News Updates", "Help needed", and "Help Offered".

The date of the post is "SATURDAY, JANUARY 01, 2005". The main post is titled "URGENT Sri Lanka: Immediate Aid Needed in Korlavelwa, Moratuwa". The text of the post reads: "There is a shortage of food at the Camp operating in the Sunanda Upananda Temple in Korlavelwa, Moratuwa. Approx. 680 families are living there right now. They say they have sorted out ways of cooking the food and can help themselves if given dry rations. An aid worker there estimates a minimum need of 100 Kgs of rice and 30 Kgs of Dal per meal for all the families for the next 2 days. Because of the proximity to Colombo, the people of Korlavelwa have been virtually ignored and left to fend for themselves. This need is urgent. Please contact Kelly on +54 777 313068 for more information and for directions on how to get there. Mosquero at 11:28:04 PM 17 comments 1 meta crawler 1 Want to help?".

Below the main post is a "PUNE UPDATE: 1ST JAN. 2005 - NIGHT REPORT" which states: "A) A LOT OF AID IN TERMS OF MEDICINES AND WATER HAS BEEN COLLECTED. HOWEVER, SINCE MOST OF THESE SHIPMENTS ARE BEING SENT OUT IN TRUCKS, A TRUCK FULL AT A TIME IS REQUIRED TO MOVE OUT. SO THIS IS A CALL TO THOSE WHO ARE IN THE PROCESS OF GATHERING MONEY AND OTHER THINGS, TO FOCUS ON GIVING CHEQUES FAVOURING 'THE INDIAN RED CROSS SOCIETY' OR A DIRECT CONTRIBUTION OF 'MEDICINE SUPPLIES'. MEDICINE LISTS CAN BE OBTAINED FROM THE RED CROSS AT PUNE PH.NO. 628-2813031 OR THROUGH E-MAIL AT: vmsothy@redifsaal.com".

On the right side of the page, there is a "Search This Site" section with a search input field and a "Search" button. Below that is a "Resource List" section with the text: "For a classified listing of all resources gathered at this blog, visit our Wiki links:". The list includes: "The Tsunami Info Wiki", "Aid Agencies", "Blogs", "Confirmed Deaths", "Contributors", "Fundraising Events", "Governments", "Ground Zero Information", "Health & Safety", "Hotline Numbers", "How We've Helped", and "Image Galleries".

The browser's taskbar at the bottom shows several open applications, including "javadb", "jvmssothy", "Mozilla-b", "Gmail - B...", "Schwartz", and "Schwartz". The system clock in the bottom right corner shows "Fri Jun 17, 2:04 PM".

Compatibility

Community

Volume

Value





Java™ = Participation.



F.O.S.S.



Come in WE'RE

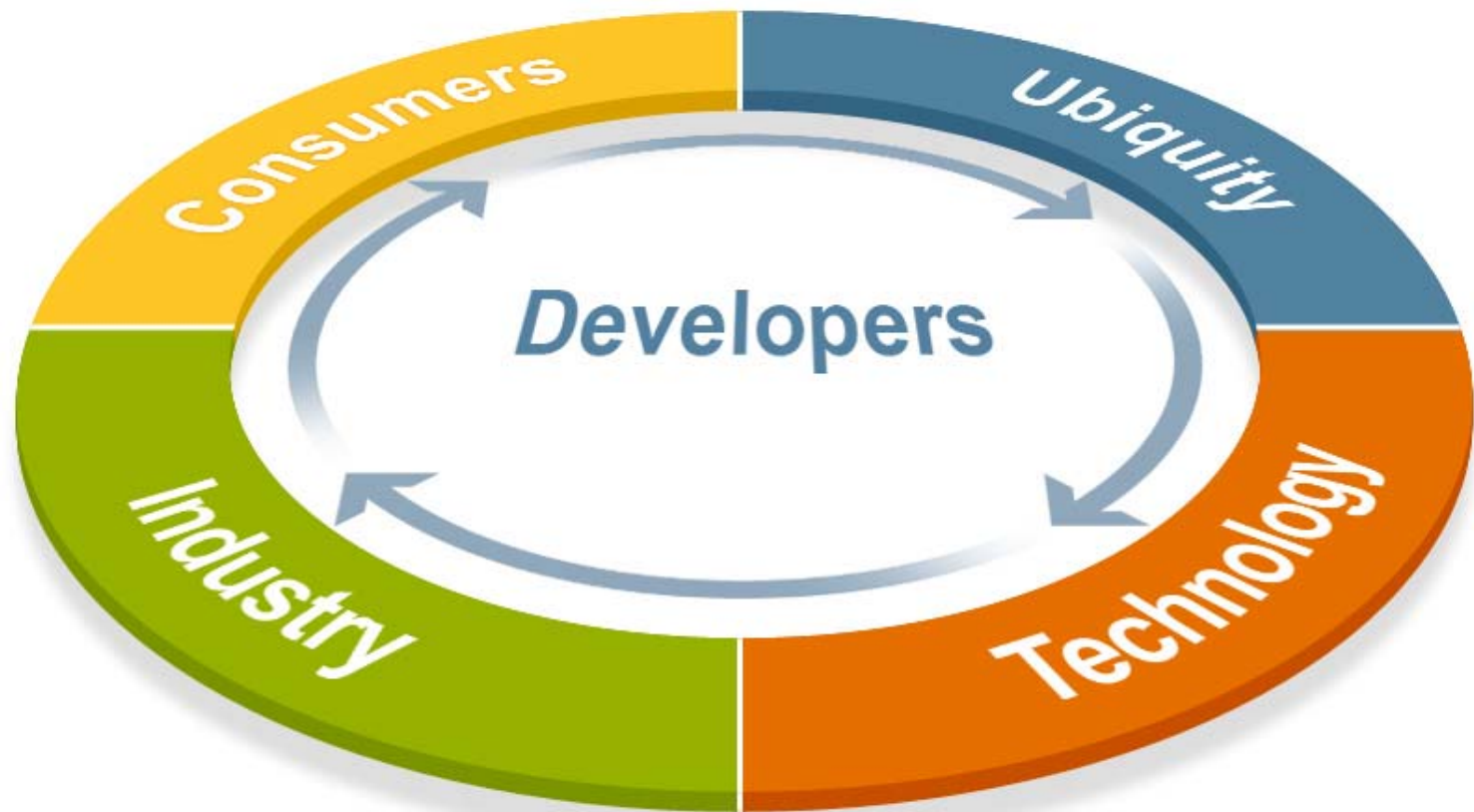
OPEN



Java™

**It's about
Participation**

Java Economy の力 それを推進するのはあなた自身



Java Sharing Success Worldwide



2.5B	Java devices worldwide
708M	Java-powered phones
700M	Personal computers
600M	Handset models from 32 manufacturers
140	Carrier deployments
1B	Java Card deployed
4.5M	Java developers

Java Sharing Success Worldwide



- Up 42% Java devices worldwide
- Up 123% Java-powered phones
- Up 8% Personal computers
- Up 77% Handset models from 32 manufacturers
- Up 50% Carrier deployments
- Up 67% Java Card deployed
- Up 12% Java developers

Partner Support for JBI

FIVE SIGHT

SEEBEYOND™
THE VISIONARY LEADER

Capgemini
CONSULTING. TECHNOLOGY. OUTSOURCING

PolarLake

Fair Isaac

CAPE CLEAR®
Business Integration, Simplified.

LogicBlaze

TIBCO®
The Power of Now®

AMBERPOINT

IONA®
Making Software Work Together™

Prima Solutions

sonic
SOFTWARE®

Trace Financial
Our Software Means Business

PERVASIVE

active
endpoints

FUJITSU

iWay
Software
An Information Builders Company

JBoss®
The Professional
Open Source Company

ORACLE®

Open Source

Java Technology





Description

Open Welcome to the GlassFish Project

The GlassFish Project is a gathering place for developers who wish to participate in the open source community developing of the latest version of Sun's Java System Application Server PE 9.0. Here you can learn about Java EE 5, start developing applications using the latest Java EE 5 technologies or try building and developing the server itself. The GlassFish project is an exciting new way for you to participate with Sun and the larger enterprise Java community.

Gain unprecedented access the latest and greatest source code for Sun's Java System Application Server PE 9.0. [Download](#) the GlassFish binary, deploy an application and try it out or [build](#) GlassFish from scratch and test it out. Join the community and send us your suggestions and comments. Note that the server is in an early access form and constantly changing and improving where not all Java EE 5 features are currently available. Click here for more [information about GlassFish](#).

To gain access to the GlassFish project, first click through the OSI approved open source [CODL](#) license.

What can I do with GlassFish

Use It

- [Download](#) GlassFish
- Start developing and deploying your applications on GlassFish
- [more...](#)

Improve It

- Test new releases
- [Submit a bug](#)
- [Request a feature](#)
- [Tinker](#) with the source code, [builds with NetBeans](#)
- [more...](#)

Taskbar: javing... | javing... | Mozilla-... | Gem - bu... | Schwartz... | Schwartz... | Fix Jul 17, 2:04 PM

Build **Bigger** Communities



- Java System Application Server
- CDDL – OSI-approved, complete indemnification/patent protection
- Integrated with NetBeans IDE
- Incorporates Java EE 5
- Compatibility is protected !

Get it from java.net

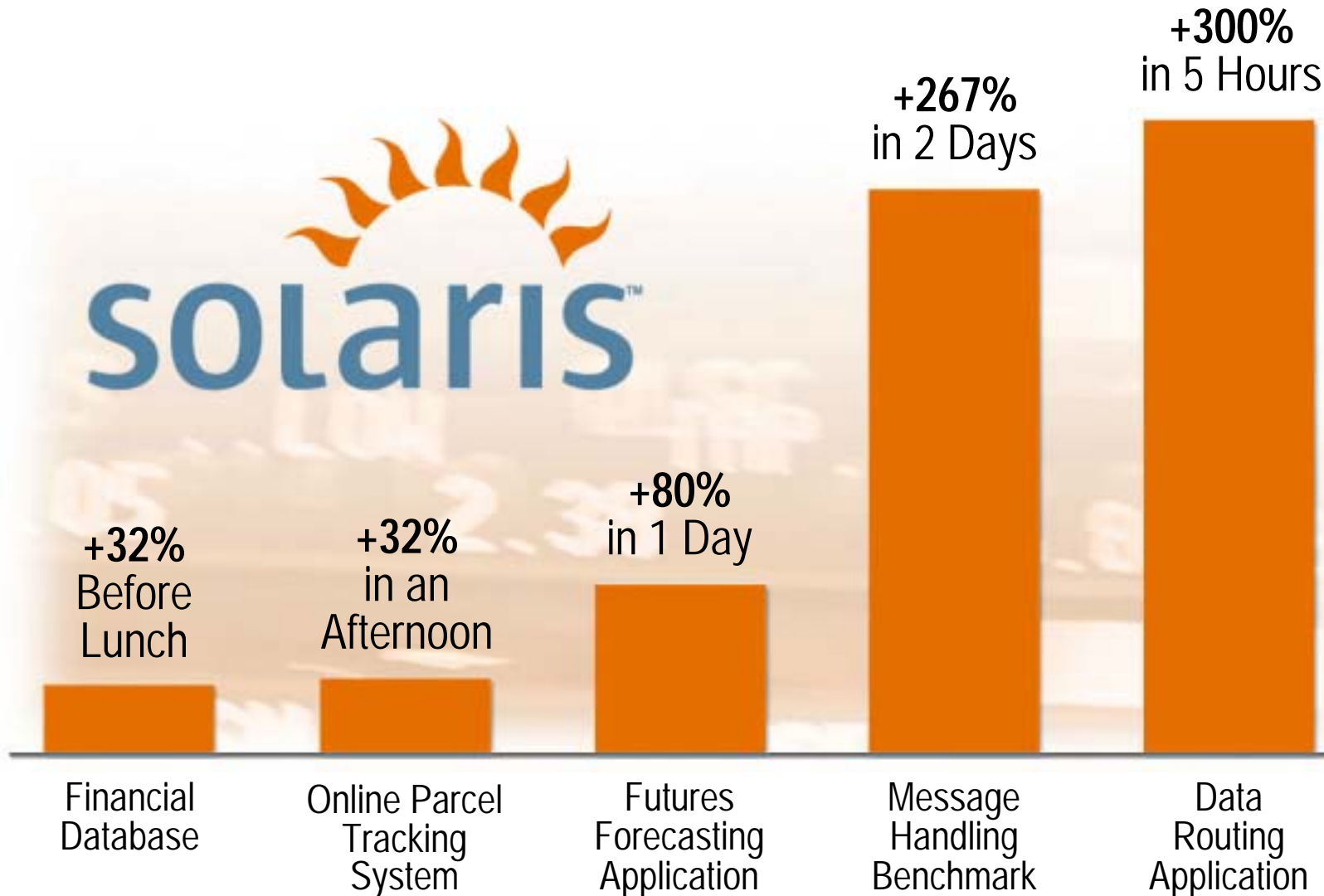
Build **Bigger** Communities, Part II



- Java System ESB
- CDDL – OSI-approved, complete indemnification/patent protection
- Integrated with NetBeans IDE
- Incorporates JBI (JSR-208)
- Compatibility is protected !

Get it from open-esb.java.net

DTrace for Solaris



Java Application

JNI

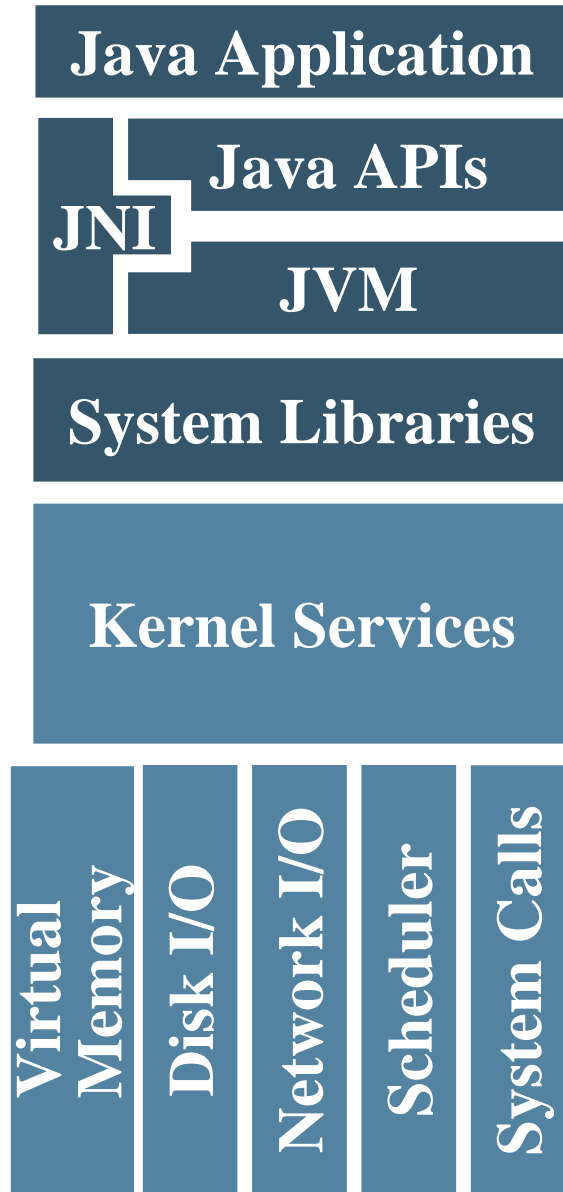
Java APIs

JVM

System Libraries

DTrace for Java





DTrace for Java



真の価値とは:

share



デジタルデバイド
を解消
Healthcare

今日のヘルスケアシステム



ヘルスケアの問題

- 増大するコスト
 - > ユーザにとっても、供給者にとっても
- 専門家の不足
- 医療記録管理の困難さ



NHIN がその回答

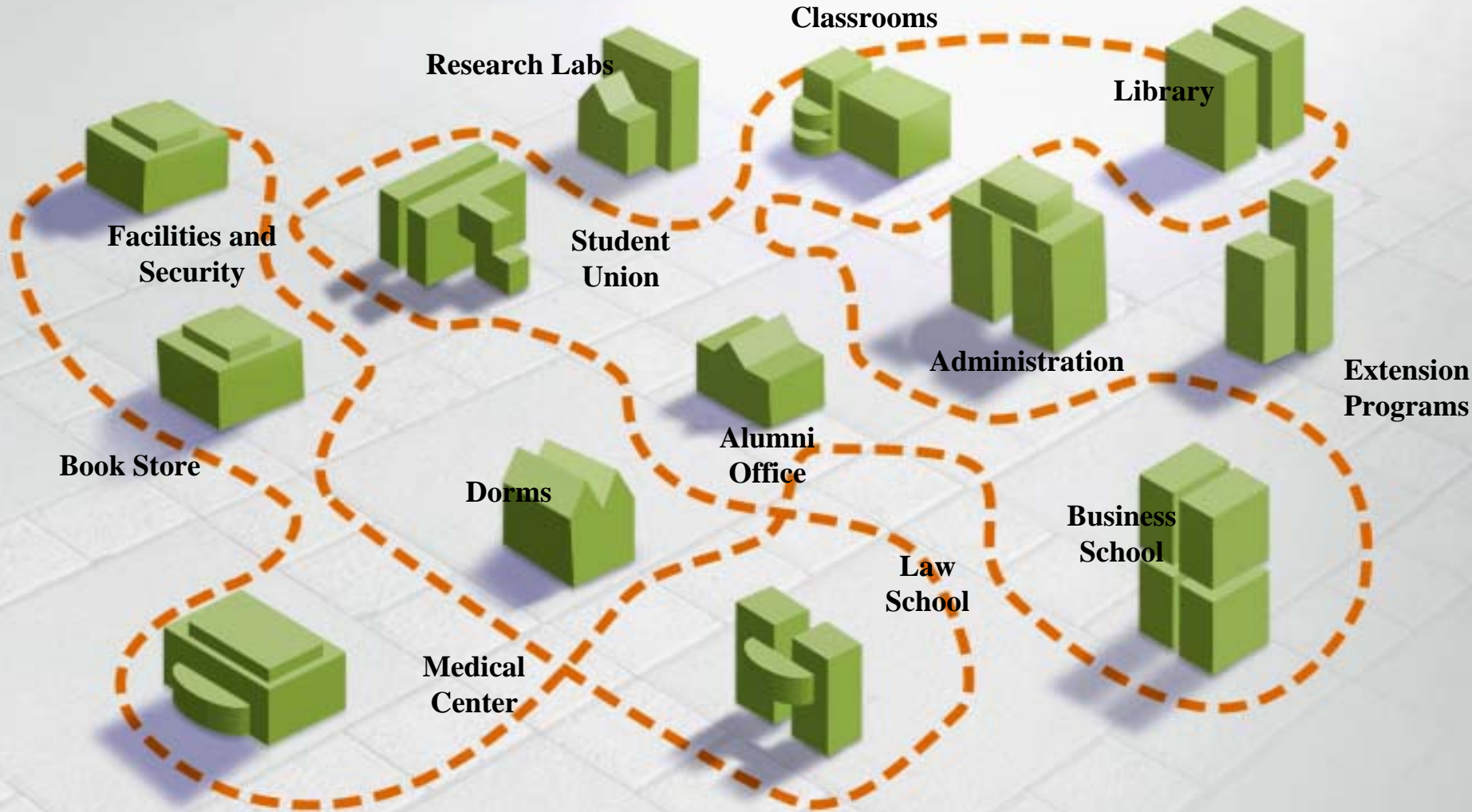




デジタルデバイド
を解消

Education

今日の教育システム



教室での問題

Access to Best Content



Teacher Education?



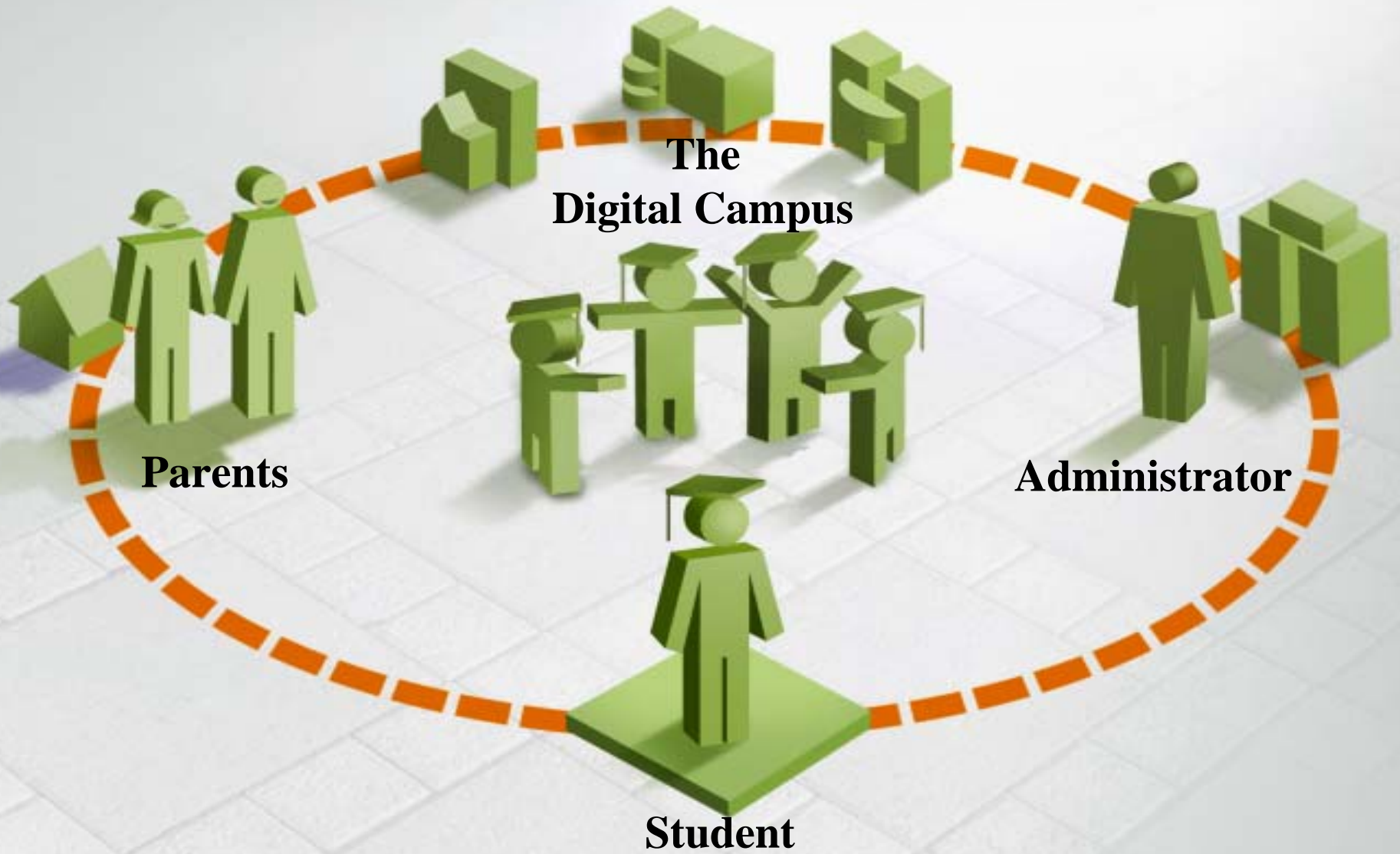
Technology Obsolescence



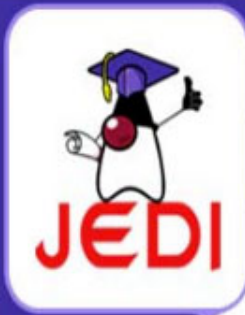
Broken Funding Model



「知識市場」



The Better Connected Classroom



JEDI is a joint project of Sun Microsystems Philippines and the University of the Philippines in promoting Java education in schools and colleges.

Java Education & Development Initiative

Home About JEDI Partners News & Events Downloads

About JEDI

Sun Microsystems shares the Filipino dream of our country being a powerful force in the global IT economy - a recognized provider of world-class IT products and services with a pool of talent that compete with the best in the world. The realization of this dream begins in the classroom where this talent is molded and nurtured. To produce the talent our country needs, teachers need help.

What is JEDI?

JEDI is a collaborative project that aims to make high-quality, industry-endorsed IT and Computer Science course material available for free to universities and colleges in the Philippines. The course material is developed with inputs from industry and conforms to international education standards and the requirements of the Commission on Higher Education. JEDI materials and resources are developed, used and enhanced in a collaborative environment using java.net.

Your JEDI gear...

Access to the java.net online community collaborating on JEDI

Free software such as NetBeans, J2SE & various development tools for illustration & actual hands-on exercises

Free access to courseware & resources (teacher & student manuals, sample exercises/ exams, teaching slides & various reference materials)



Java Making a Big Difference.

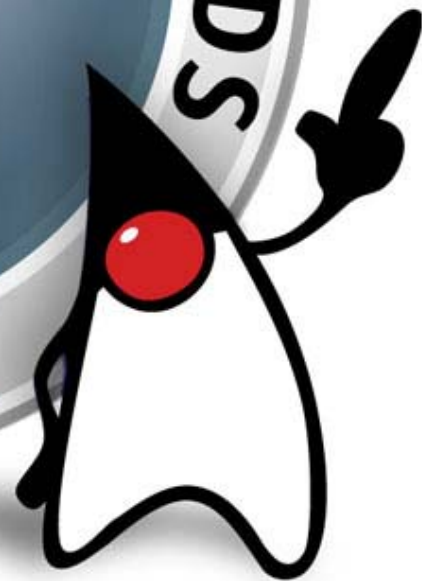
Student Developer Community



http://www.sun.com/edu/student_developer

Java なしで地球はまわらない







*i-Mode FeliCa Mobile
Wallet Service*

*DEVICE
CATEGORY*



LOOKING GLASS CATEGORY



Cosmo Scheduler D



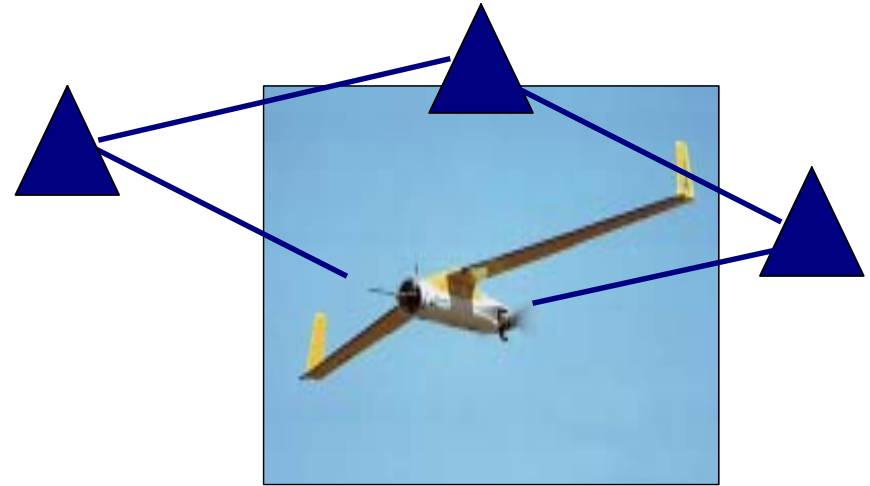
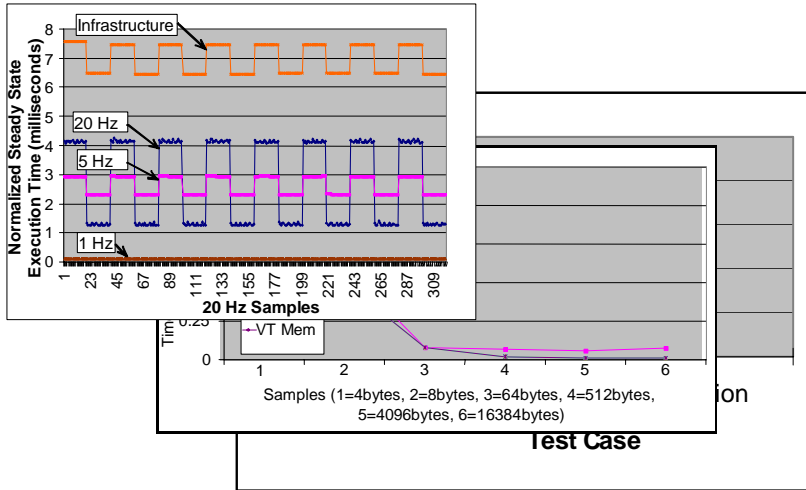


*ScanEagle Autonomous
Navigation of Unmanned
Air Vehicle*

*EMERGING
TECHNOLOGY
CATEGORY*



First UAV Navigational Control Using RTSJ



Lab simulations
up to 600
components

Autonomous
auto-routing

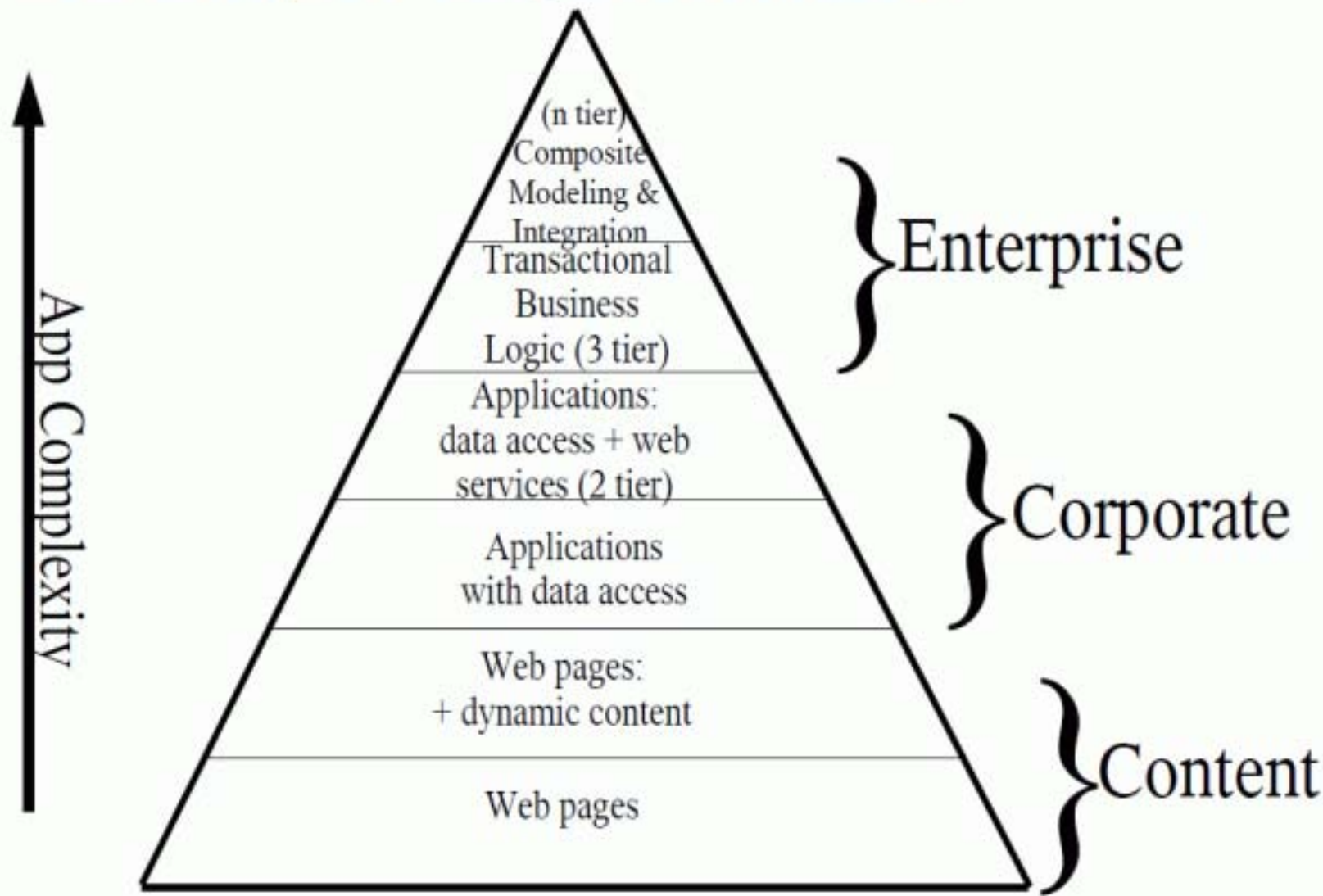
Naming Change

- Java 2 ME (J2ME) -> Java ME
- Java 2 SE (J2SE) -> Java SE
- Java 2 EE (J2EE) -> Java EE
- **従来バージョンは変更なし**
 - > Tiger **は** J2SE5.0
 - > J2EE 4.0
- **今後リリース予定**
 - > Java EE 5, Java EE 6
 - > Java SE 6 (Mustang), Java SE 7 (Dolphin)

Java EE 5

- Web サービスのサポートをより充実
 - > EoD を徹底
- Web サービスの新しい標準をサポート
- EJB を大幅に変更
 - > 軽量でシンプルな EJB
- Persistence API の分離
- JSF による Web アプリケーション開発の EoD

Developer Segmentation



EJB3.0 Persistence

- EJB/JDO 競合問題を解決
 - > 古い問題:
 - > EJB Entity Bean と JDO の選択
 - > 解決策:
 - > 単一の Persistence API が成立
 - > Persistence API は EJB3.0 の一部
 - > しかし EJB3.0 から分離することも可能

Beyond Java EE 5 (Java EE 6)

- Integration – SOA
 - > Java Business Integration (JSR-208)
- Scripting Support
 - > スクリプト言語から Java ベースのビジネスロジックを呼び出す
- Portlets (JSR-168), Xquery API (JSR-225), Web Service Addressing (JSR-261)

SOA Agenda

- Composite Service
- Enterprise Service Bus
- Java Business Integration (JSR 208)

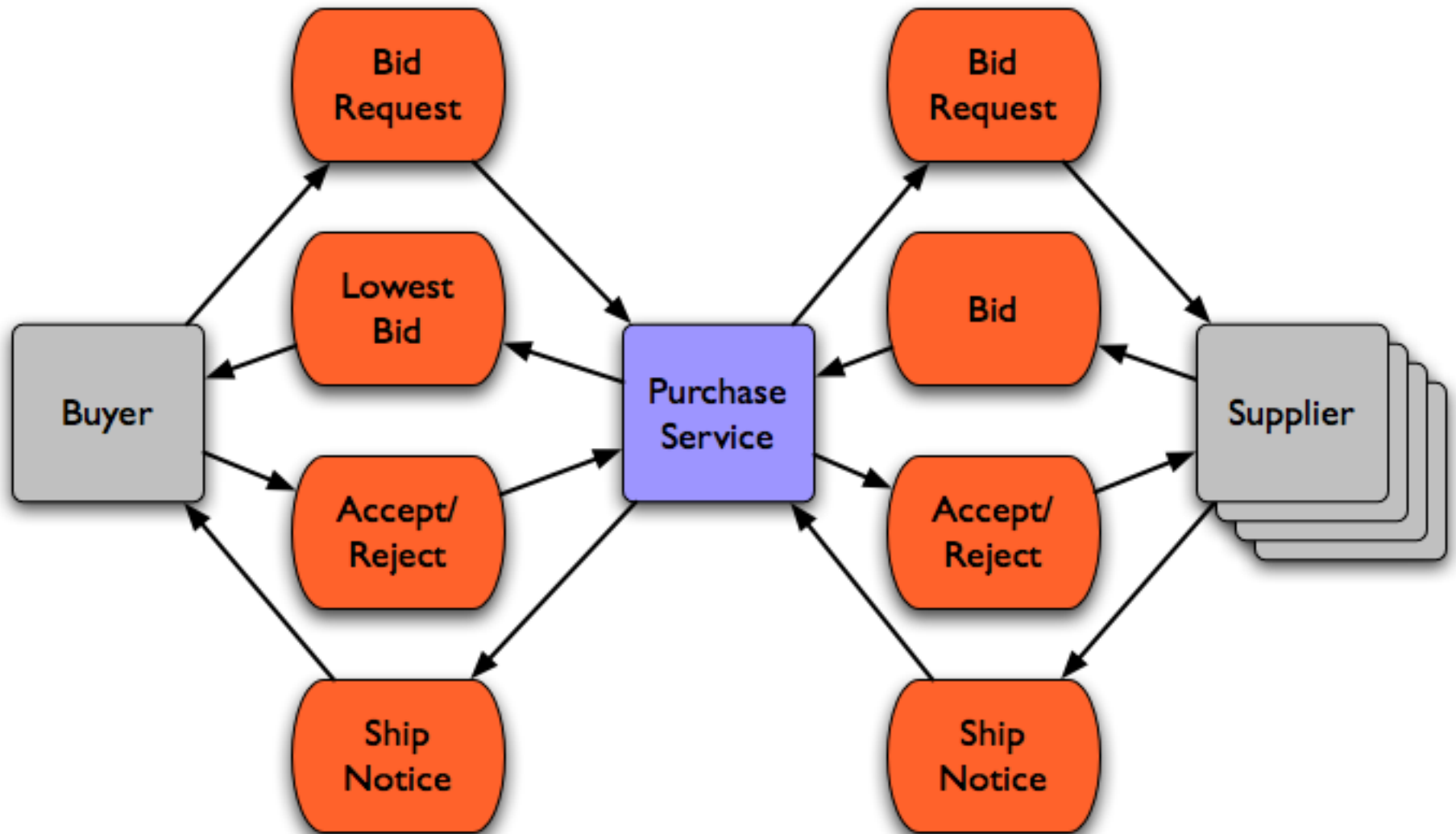
サービスに要求されるもの

- データ変換
- メッセージのルーティング
- データベース呼び出し
- オーケストレーション的対話
- ビジネスロジックの適用
- ビジネスポリシーの適用
- ビジネス的例外を扱う
- 承認の要求
- ...

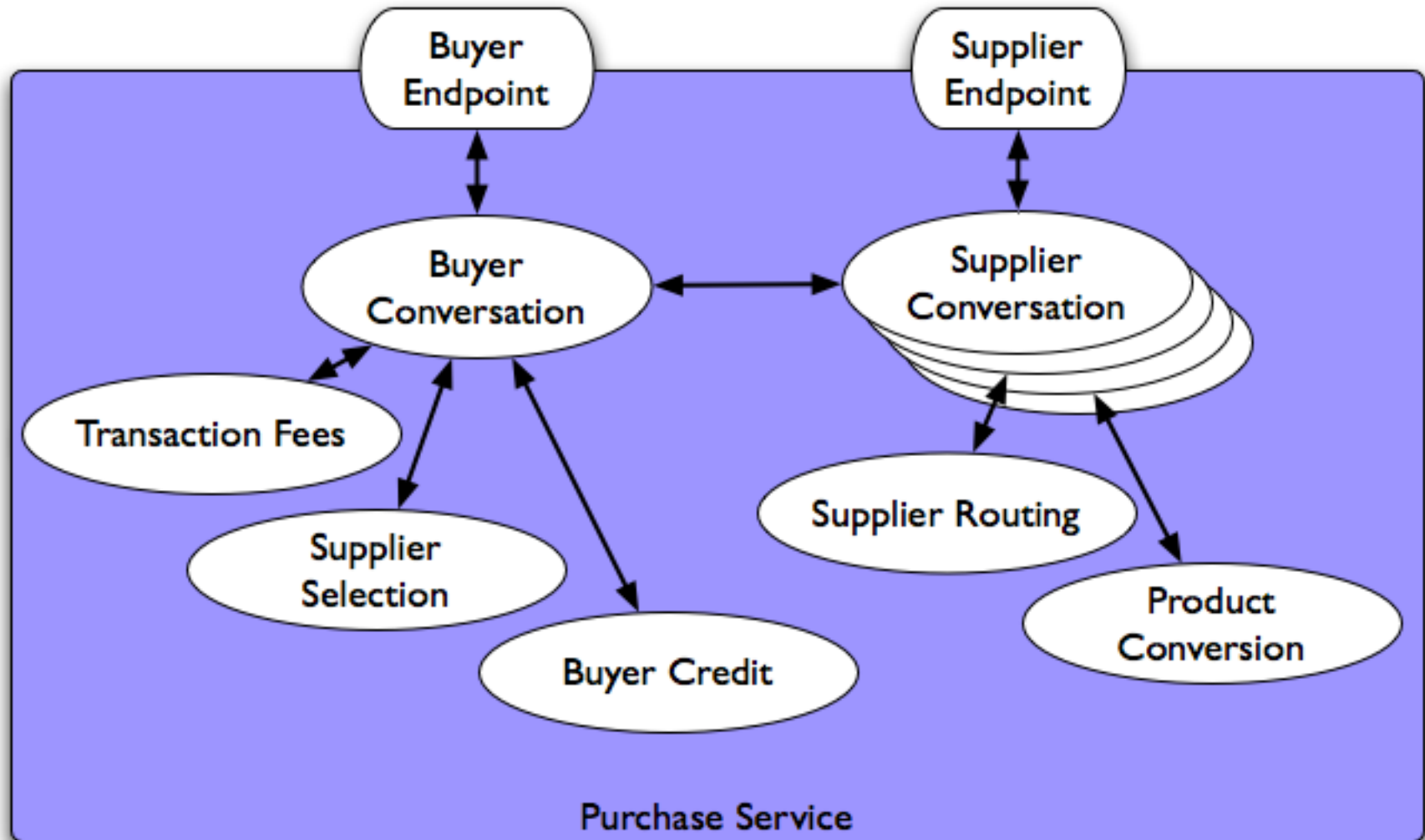
サービス実装の例

- XSLT
- EJB
- BPEL
- SQL
- XQuery
- Routing Table
- Business Rules
- EDI Transform
- ...

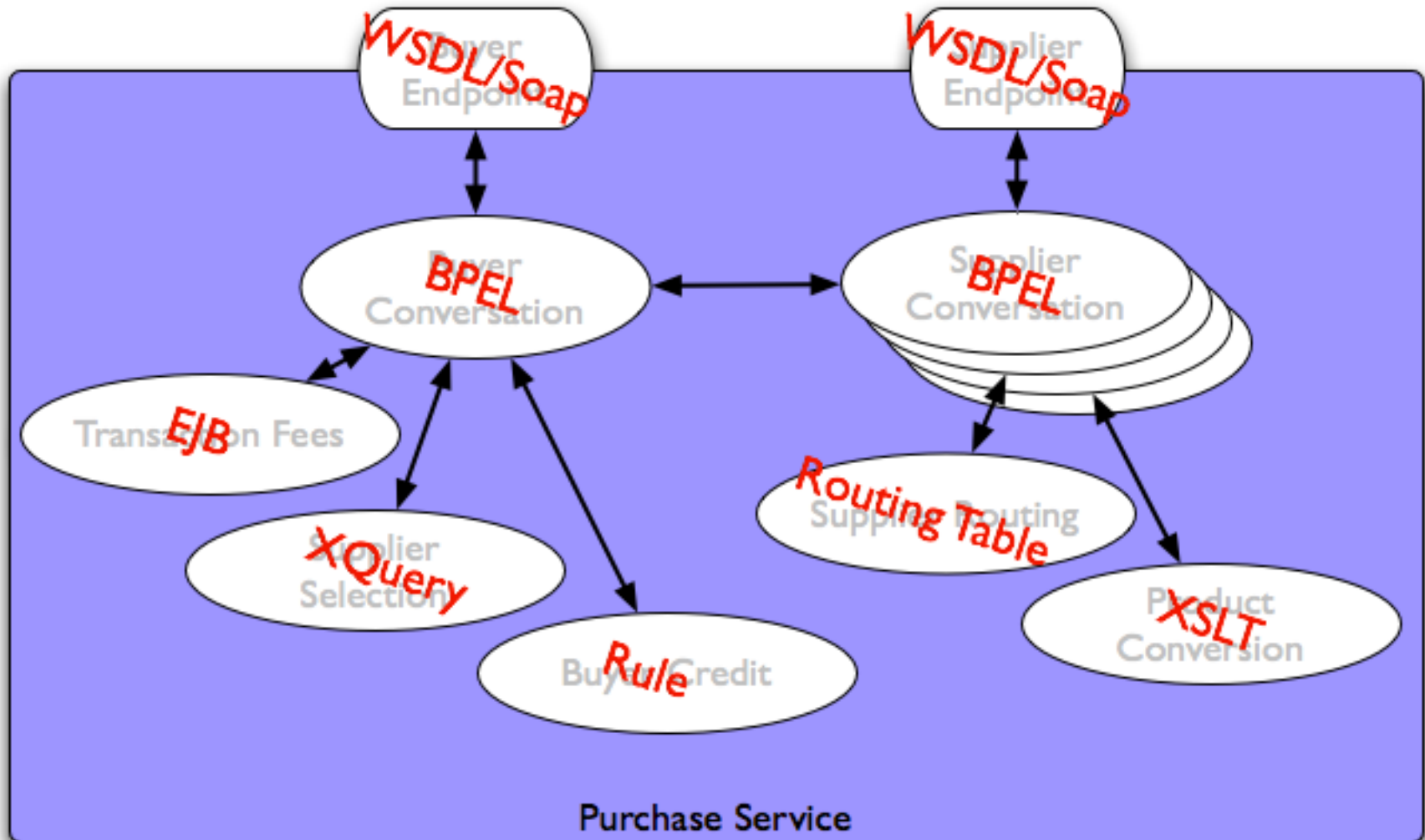
購買サービスの例



購買サービスの機能



購買サービスの実装



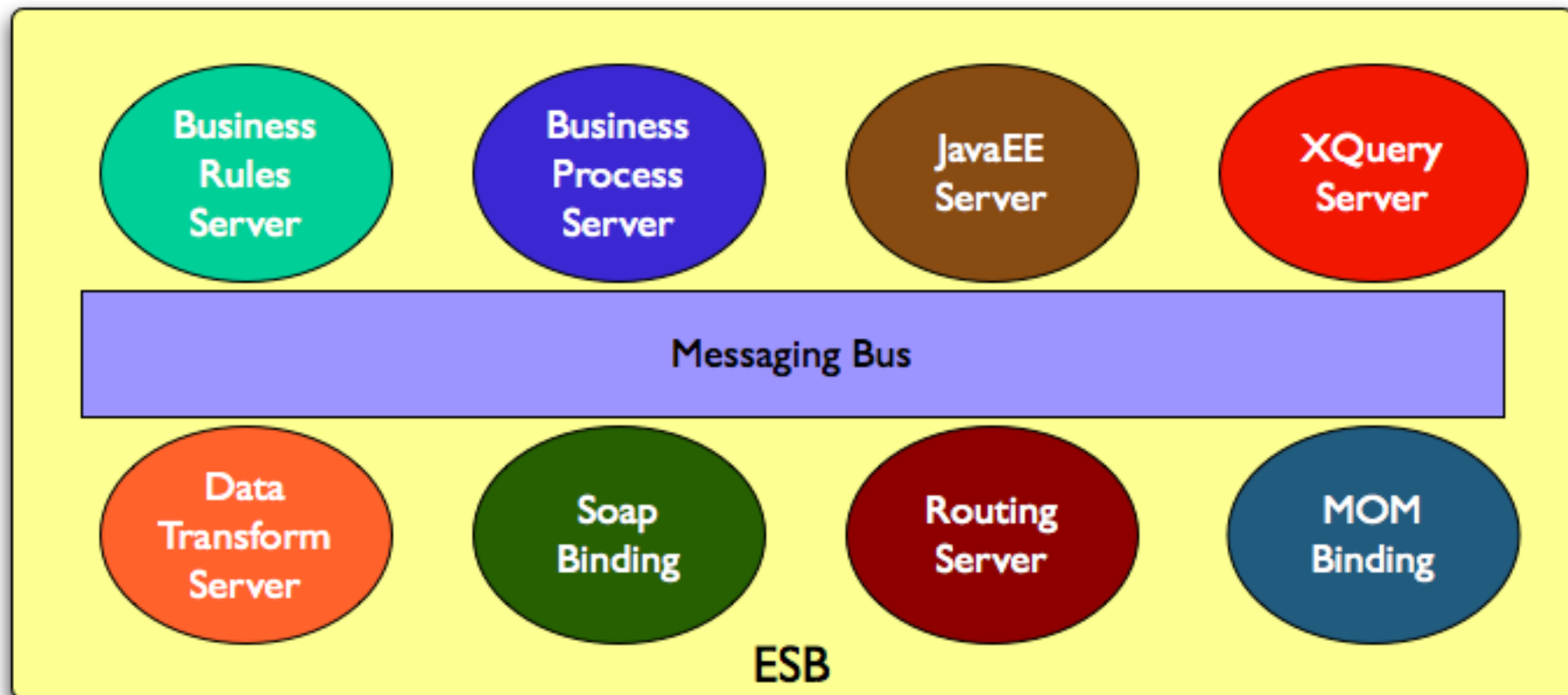
Enterprise Service Bus (ESB)

ツールあるいはフレームワークで
コンポジットサービスを
開発、デプロイ、実行、モニタリング、
管理するもの

複数のESB と Java Platform

- 多くの ESB は、Java プラットフォームの上で実装されている
- それぞれが異なる点
 - ツールまわり
 - サービスのパッケージ方法
 - サービスのデプロイ、モニタリング、管理
 - ESB の拡張機構
 - ESB のモニタリング、管理

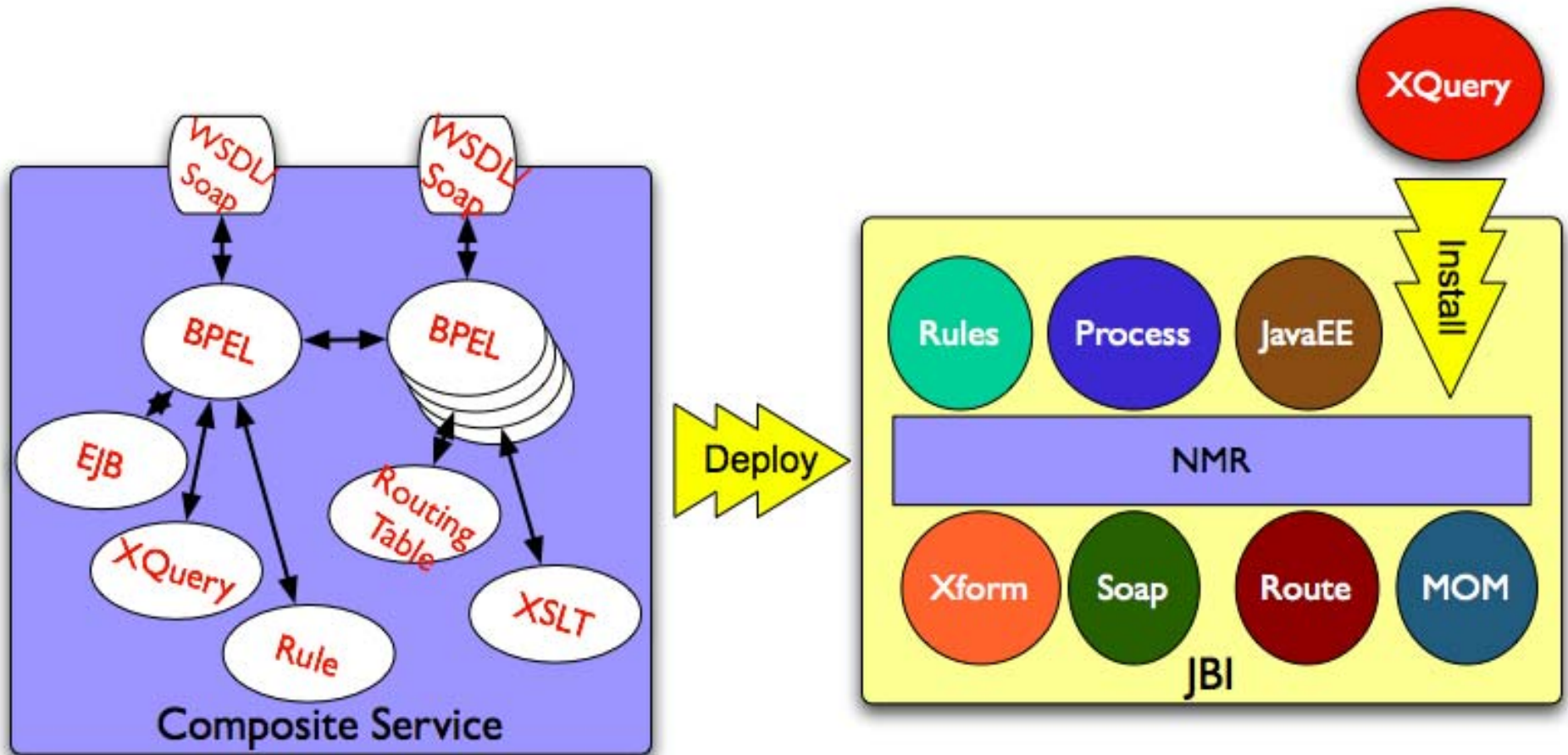
ESB とは : テクノロジーのコラボレーション



SOA と Java プラットフォーム

- コンポジットサービスの提供
 - 標準的なサービス組み合わせ
 - 標準的なサービス記述
- ESB コラボレーションの拡張
 - 標準としての “Normalized Message Routing”
 - 標準的な “コンポーネント・モジュール化”
- その効用
 - サービスのモジュール化
 - ESB のモジュール化

Java Business Integration (JSR 208)



For More Information?

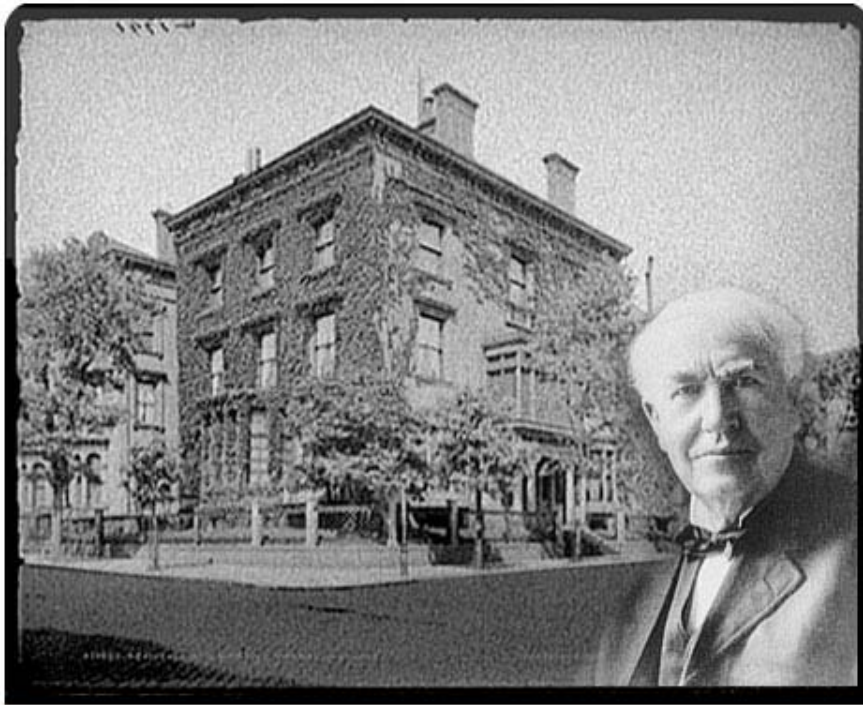
- JavaOne online
 - > <http://java.sun.com/javaone>
 - > セッションスライド
 - > Webcast
- Blog
 - > <http://jp.sun.com/communities/blogs/>
- JavaOne Tokyo
 - > 次回の JavaOne は、東京で開催
 - > 11月上旬
 - > 参加人数一万人規模
 - > 東京国際フォーラム



Appendix



Technology Has Social Utility, Too

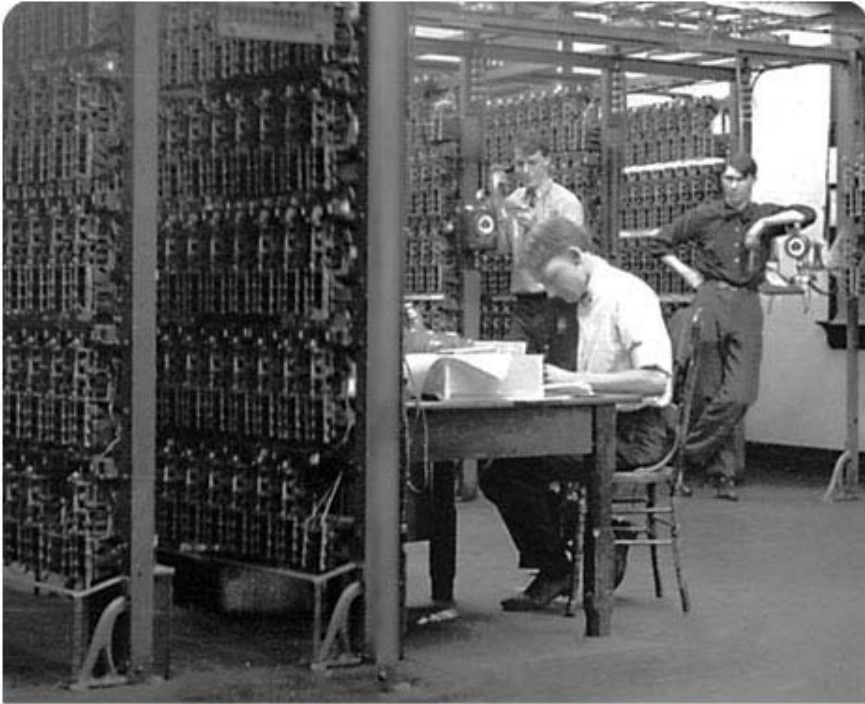


1882



1936

Telecommunications



1950s



Today

参加時代の効用



The information age
is history.

Long live
the Participation
Age.



Participation
drives economic
and social progress.



Participation
is blurring
boundaries.



F.O.S.S.

There is a
social utility
to free software.



